

BCadTools for Bricscad

Brief Description:

BcadTools provides a number of AutoCAD-compatible commands, which are not available in Bricscad - especially the Multiline commands, Battman, BattEdit, AttRedef and AttSync, and some rarely used commands like Arx, Compile and Dxbin. Besides these basics, BcadTools additionally offers several common-purpose features like LayerTools.

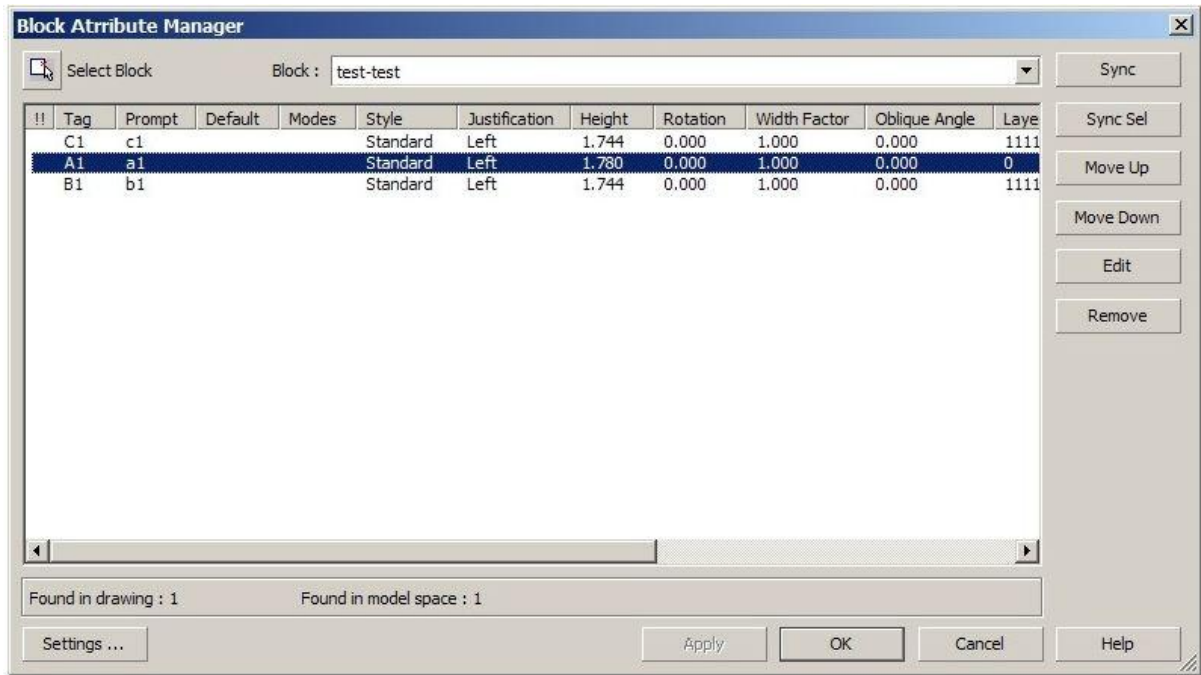
Other Features:

- Battman, Battedit, Attredef, Attsync - to edit block definitions and attributes
- Multiline commands - Mline, Mledit, Mlmodi, Mlstyle to create and edit multilines and their styles
- LayerTools - powerful and smart tools to manage layers
- Arx - load, unload, list Arx/Brx/Drx applications
- Compile - compile SHP files into SHX files
- Dxbin - load DXB files into the drawing

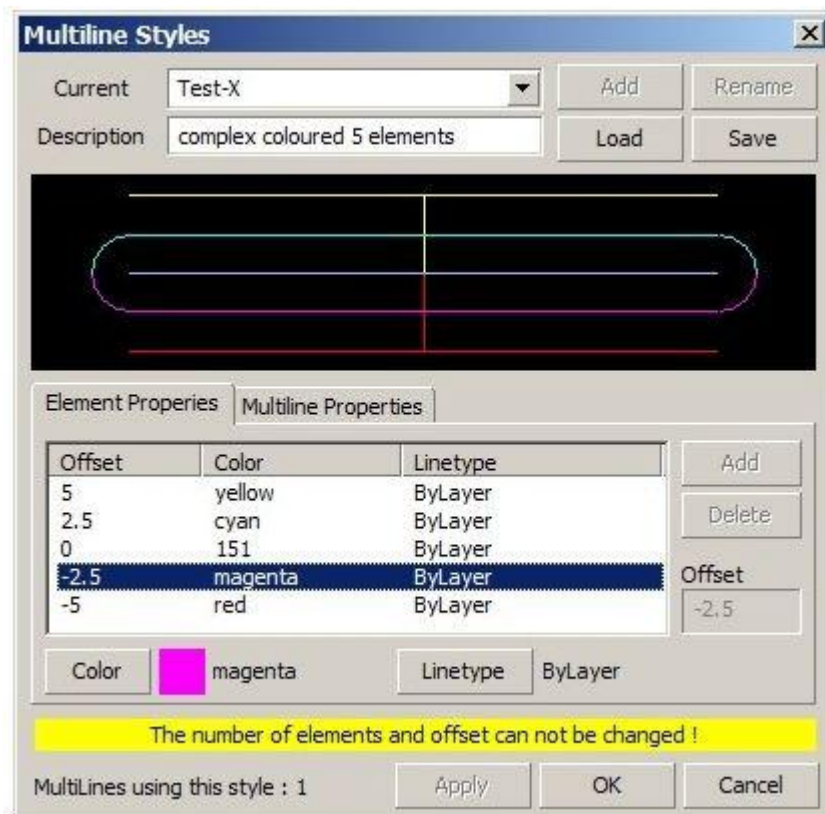
Review: Among all the tools in BCadTools, the one I like the best is the MLINE command. MLNE is an often-requested and missed command in Bricscad and BCadTools provides this command. You can draw MLINES and also set the styles for MLINES but MLEDIT is not yet implemented. A full, native implementation of MLINE is planned during the life-cycle of V12.

The BATTMAN and BATTEDIT commands allow flexible editing of attributes, including the capability to reorder the attributes in a block.

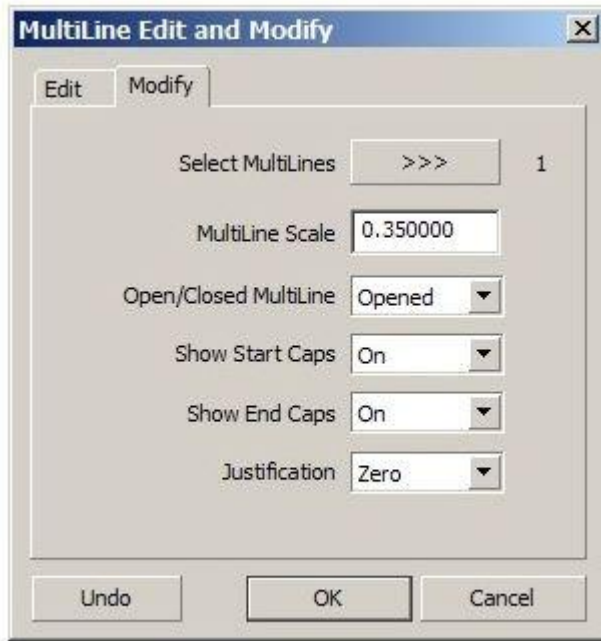
ScreenShots:



BCadTools – BattMan

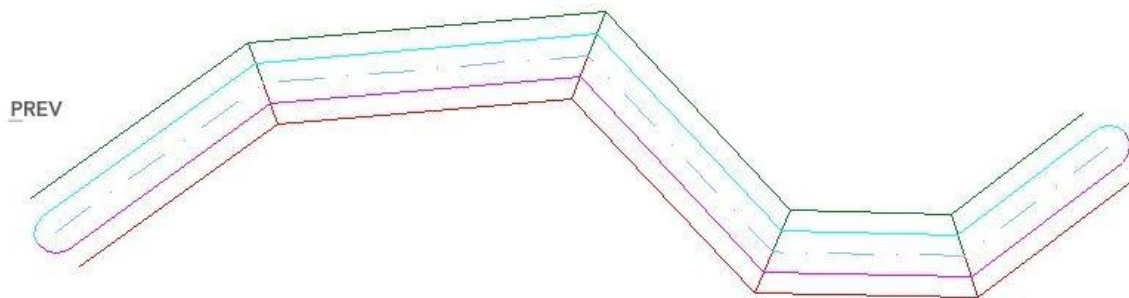


Multiline Styles



Modify Multilines

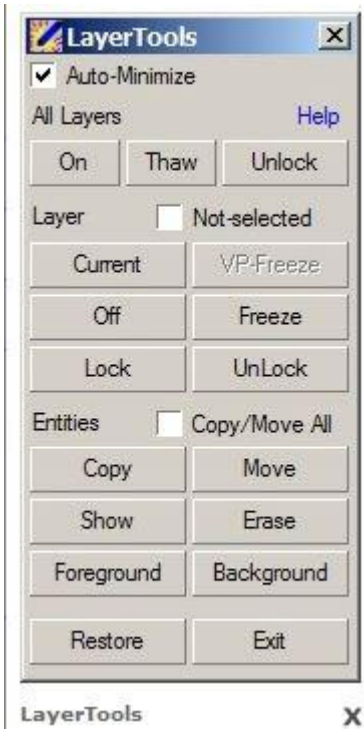
X



Draw Multilines
Image 3 of 6

X

Draw Multilines



BCadTools LayerTools