

DocTabs for Bricscad

Brief Description:

DocTabs is a plug-in application for Bricscad that provides an easy method for switching between documents via a tab control bar that can be placed on the Top, Bottom, Left or Right of the drawing editor.

Other Features:

- Re-order tabs by dragging
- handy menu items for saving, closing drawings
- double click a tab to close a drawing
- double click the control bar to open a new drawing

How does it work:

DOCTabs shows all the open drawings in a tabbed fashion at the bottom, top, left or right of the drawing window. This is much more intuitive and faster than having to go to the *Window* menu and look at all the currently opened drawings.

This saves considerable time when you have multiple drawings open and want to quickly jump between them.

In addition, there is a right-click option available which allows you to open another drawing, start a new drawing, save existing ones and perform other operations, all from within the tab.

By eliminating the need to go to the File and Window pull-down menu for managing multiple drawing files, you reduce operator keystrokes activity and thus operator fatigue.

ScreenShots:

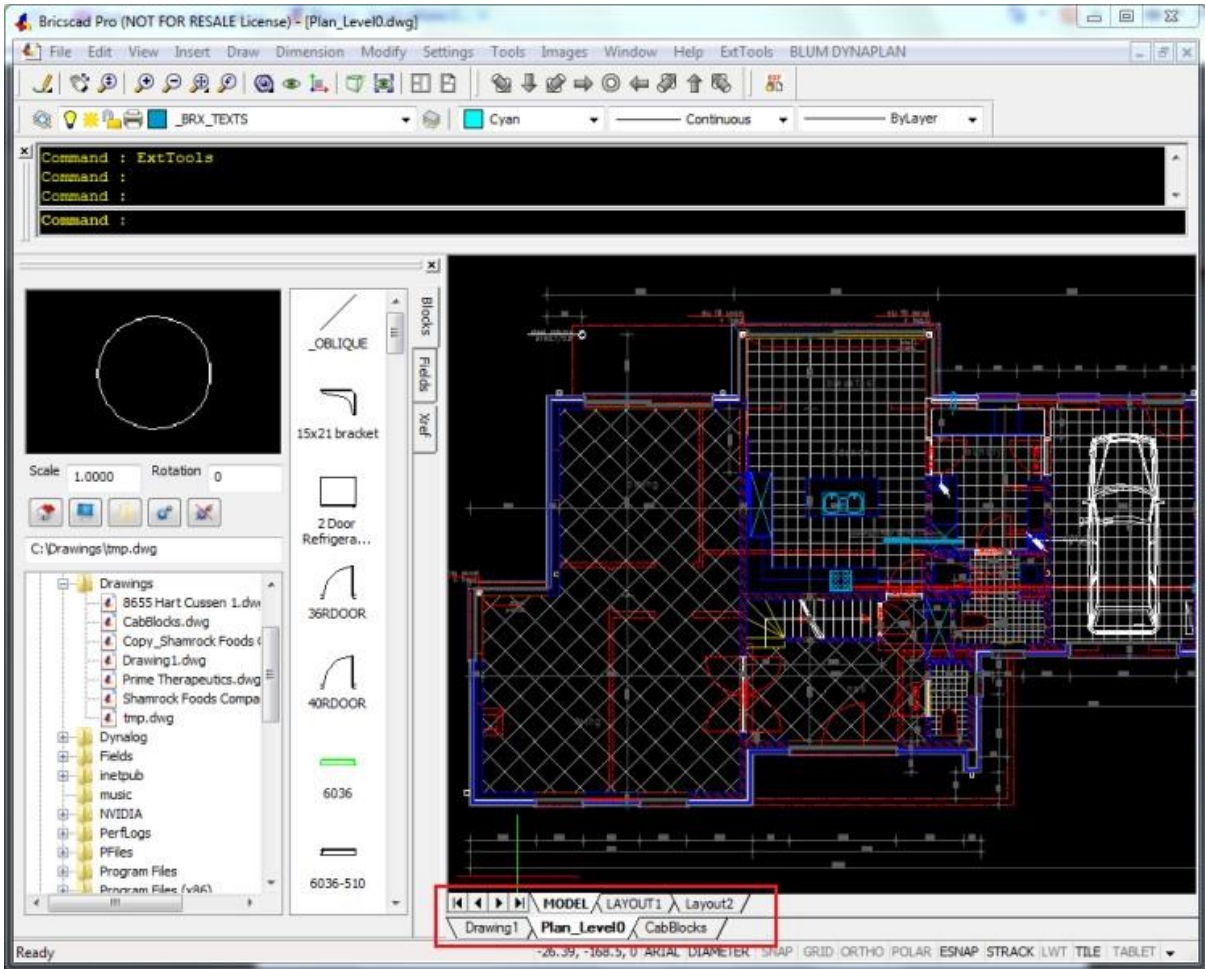


Fig 1: DOCTabs @ the bottom of the drawing window area

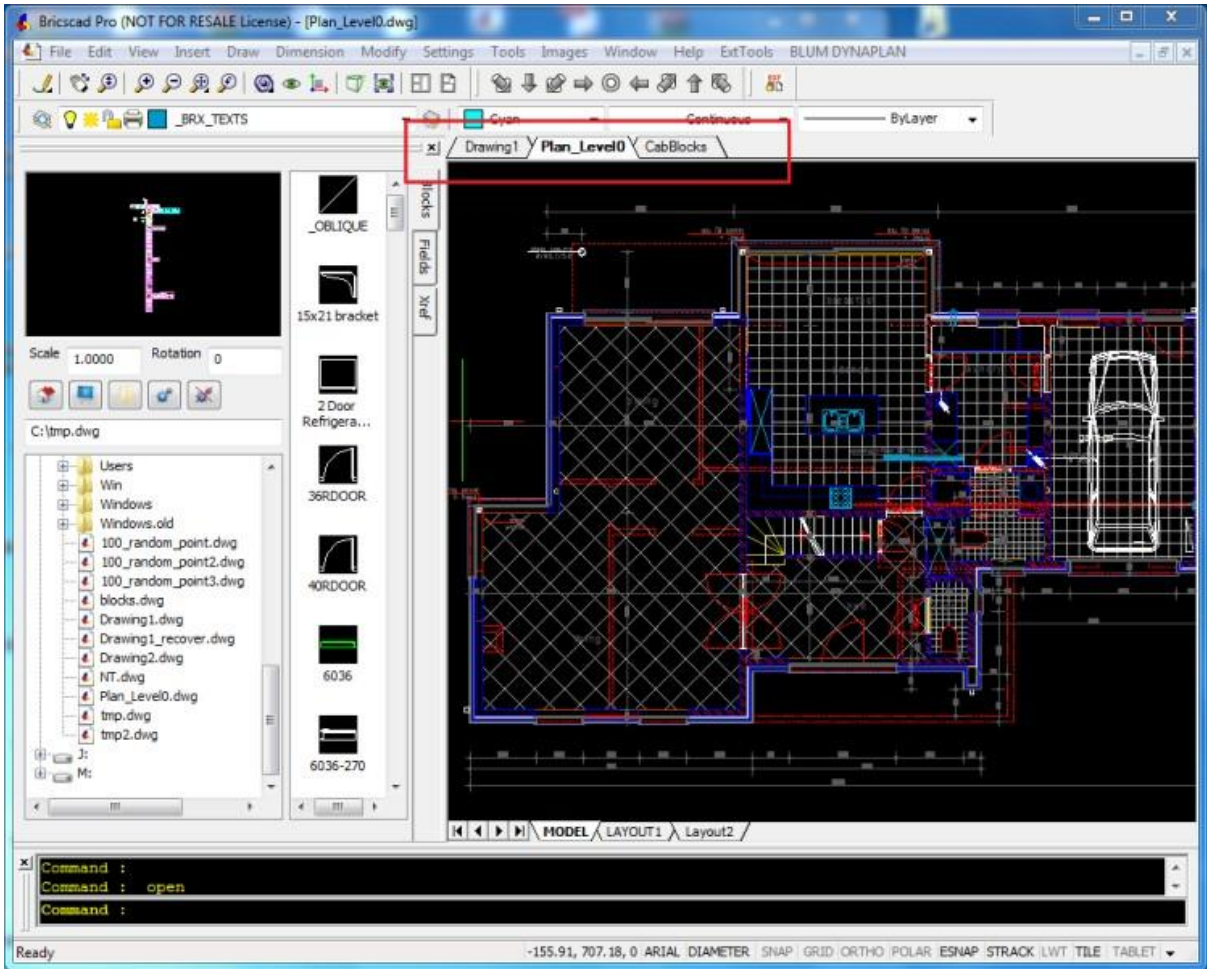


Fig 2: DOCTabs @ the bottom of the drawing window area

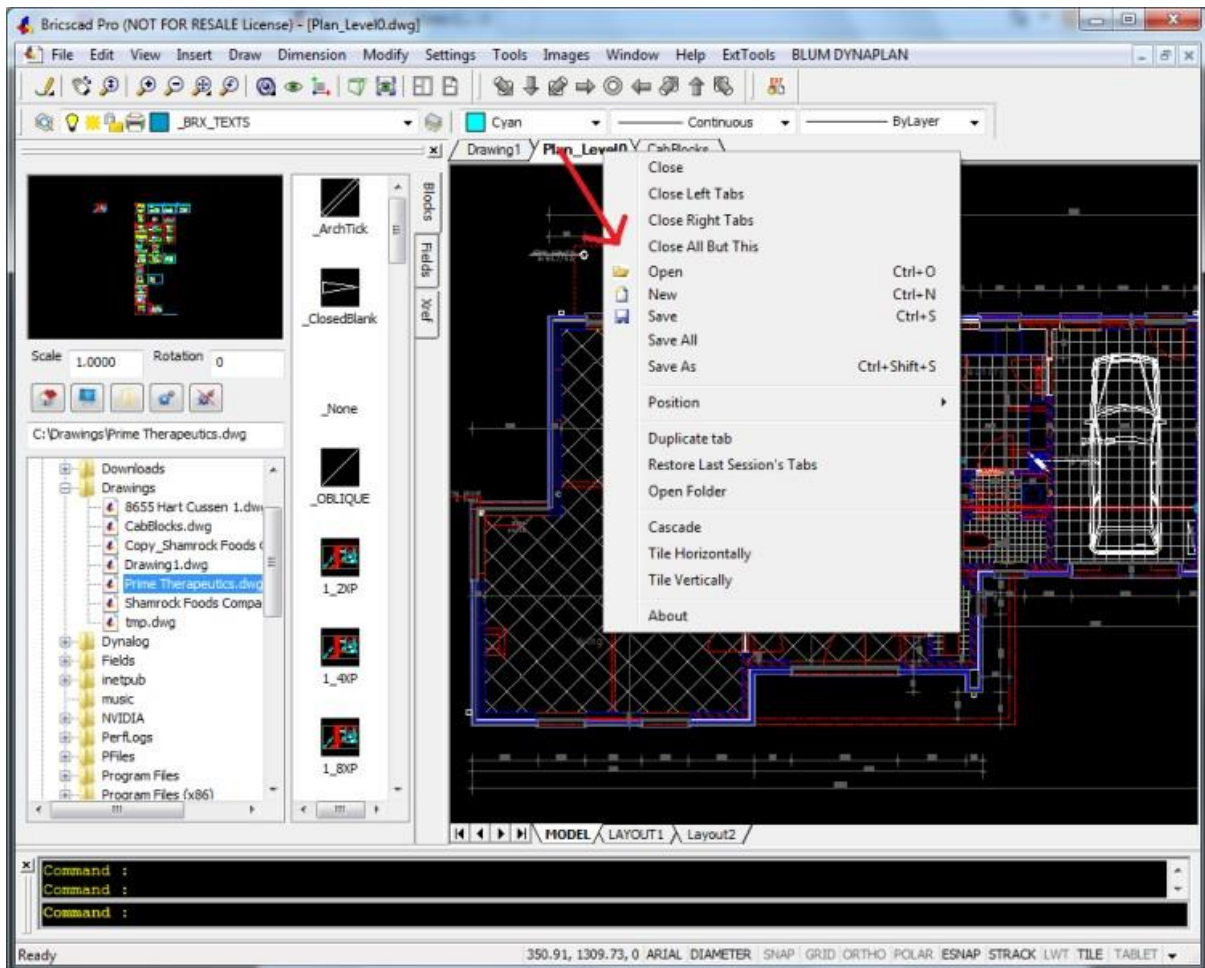


Fig 3: DOCTabs menus and options

Who created this app?

DocTabs is a creation of Daniel Marcotte, a veteran Bricsys programmer, based in Shanghai, China.